

PUREFLO® D25C FILTER DISCS

arranged.



PureFlo® D25C Filter Disc have been designed for simple, quick, and efficient filtration of fluids used in laboratory, pilot, and little flow rate applications. 10 different filter media options can be placed in the disc design for excellent chemical compatibility with 10 different fittings. The small compact design of the filter discs minimizes hold-up volume. No adhesives or binders are used in the encapsulation process. The disc is thermally-sealed to ensure integrity. Removal efficiency from 0.1 to 500 micron. Also available in black for UV curing systems.

SPECIFICATIONS

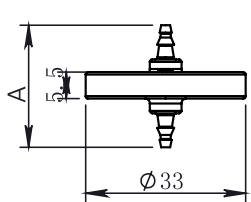
MATERIALS OF CONSTRUCTION:	Outer disc: _____ Polypropylene Filter Media: _____ Wide selection, see page 2 Media Supports: _____ Depends on Filter Media O-Rings on quick fittings: _____ Silicone, EPDM, NBR
FITTING CONNECTIONS:	See page 2
EFFECTIVE FILTRATION AREA:	4,6 cm ²
MAX. OPERATING TEMPERATURE:	80 °C
MAX. OPERATING CONDITIONS FOR LIQUIDS AT 22°C:	Operating Pressure: _____ 5.5 bar
	Forward Differential Pressure: _____ 2.1 bar
	Reverse Differential Pressure: _____ 1.1 bar

PES MEMBRANE (S)	PTFE HYDROPHOBIC MEMBRANE (F)	GLASS FIBER (G)	HI PERFORMANCE PP MEDIA (HP)	PP MEDIA (P)	NYLON MEMBRANE (N)
020 = 0.2 µm	010 = 0.1 µm	H = HEPA	003 = 0.3 µm	006 = 0.6 µm	020 = 0.2 µm
045 = 0.45 µm	020 = 0.2 µm	002 = 0.2 µm	006 = 0.6 µm	010 = 1.0 µm	045 = 0.45 µm
065 = 0.65 µm	045 = 0.45 µm	004 = 0.45 µm	010 = 1.0 µm	030 = 3.0 µm	065 = 0.65 µm
080 = 0.8 µm	100 = 1.0 µm	005 = 0.5 µm	030 = 3.0 µm	050 = 5.0 µm	080 = 0.8 µm
120 = 1.2 µm	300 = 3.0 µm	010 = 1.0 µm	050 = 5.0 µm	070 = 7.0 µm	120 = 1.2 µm
	500 = 5.0 µm	030 = 3.0 µm	100 = 10 µm	100 = 10 µm	
	999 = 10 µm	050 = 5.0 µm		200 = 20 µm	
		100 = 10 µm		300 = 30 µm	
		200 = 20 µm		400 = 40 µm	
				500 = 50 µm	
				700 = 70 µm	

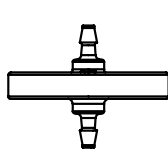
NYLON MELT-BLOWN (NN)	NYLON MESH (NS)	STAINLESS STEEL MESH (SS)	POLYPROPYLEN MESH (PS)
010 = 1 µm	070 = 7 µm	060 = 6 µm	10x = 100 µm
030 = 3 µm	100 = 10 µm	180 = 18 µm	15x = 150 µm
050 = 5 µm	200 = 20 µm	200 = 20 µm	20x = 200 µm
100 = 10 µm	400 = 40 µm	250 = 25 µm	30x = 300 µm
200 = 20 µm	600 = 60 µm	370 = 37 µm	50x = 500 µm
	10x = 100 µm	460 = 46 µm	
	20x = 200 µm	530 = 53 µm	
		610 = 61 µm	

FITTING GUIDE

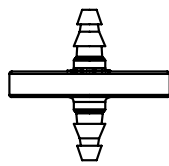
OH
1/16"-3/32" Hose barb



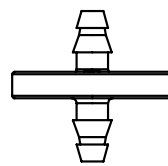
AH
3/32" Hose barb



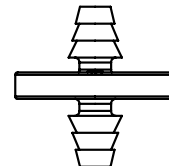
1H
1/8"-3/16" Hose barb



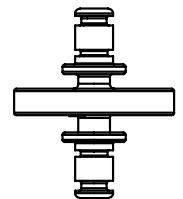
2H
3/16"-1/4" Hose barb



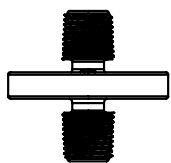
3H
1/4"-3/8" Hose barb



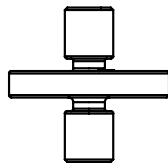
1Q
1/8" Male quick coupling (PMC/20-S)



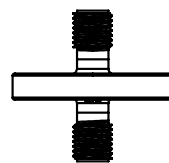
1N
1/8" NPTM



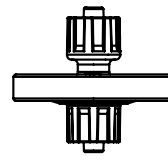
2UF
1/4"-28 Thread female



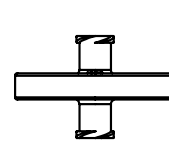
1C
1/8" Compression (JACO compatible)



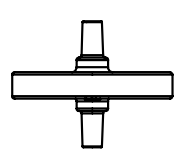
LM
Luer lock male



LF
Luer lock female



LS
Luer lock male slip



Data can change without prior notice. May 2025.