

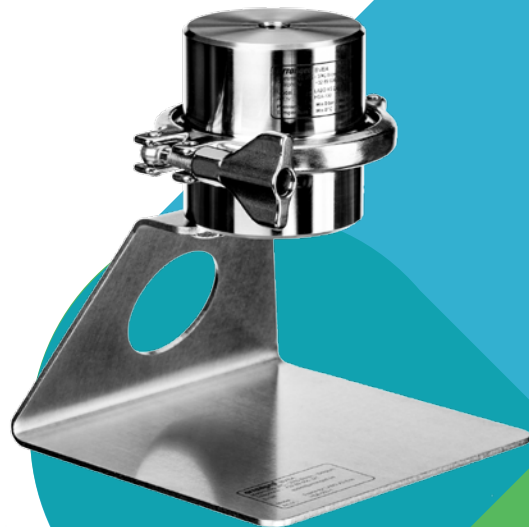
SMALL VOLUME FILTRATION

Labo XS Eco Test Housing.

Designed for small volume filtration or testing of industrial filter cartridges on labo scale.

CONCEPT

Sanitary design and thus easy to clean, this small housing offers you the possibility to test industrial filter cartridges in lab for small liquid volumes.



PERFORMANCE

Flow rate is typically between 0.5 and 2 liters/minute. All surfaces are smooth to guarantee a perfect clean-ability. The housing consists only of 3 parts :

- dome
- base
- clamp & gasket

PRODUCTIVITY

Especially for scaling up new formulations, the Labo XS Eco is the perfect tool.

Can also be part of equipments (eg machines) where small volumes have to be filtered and where stainless steel or PTFE housings are required.

MATERIALS OF CONSTRUCTION

Housing SUS304 (Optional: SUS316L or PTFE)

Gasket EPDM (Optional: FKM, Silicone, FEP+FKM)

MAX. OPERATING CONDITIONS

Temperature 0 to 60°C

Pressure 0 to 5.0 bar

DIMENSIONS & CONNECTIONS

In/Outlet connection G1/4 (BSP straight)

Total Length 82 mm

... **arranged.**

Filtration systems

Meremweg 37C
3740 Bilzen - Belgium

+32 89 656 321
+32 89 656 801

assist@arranged.be
www.arranged.be

Ordering Code :
Housing : HSA-100
Support Frame : HSA-003-1